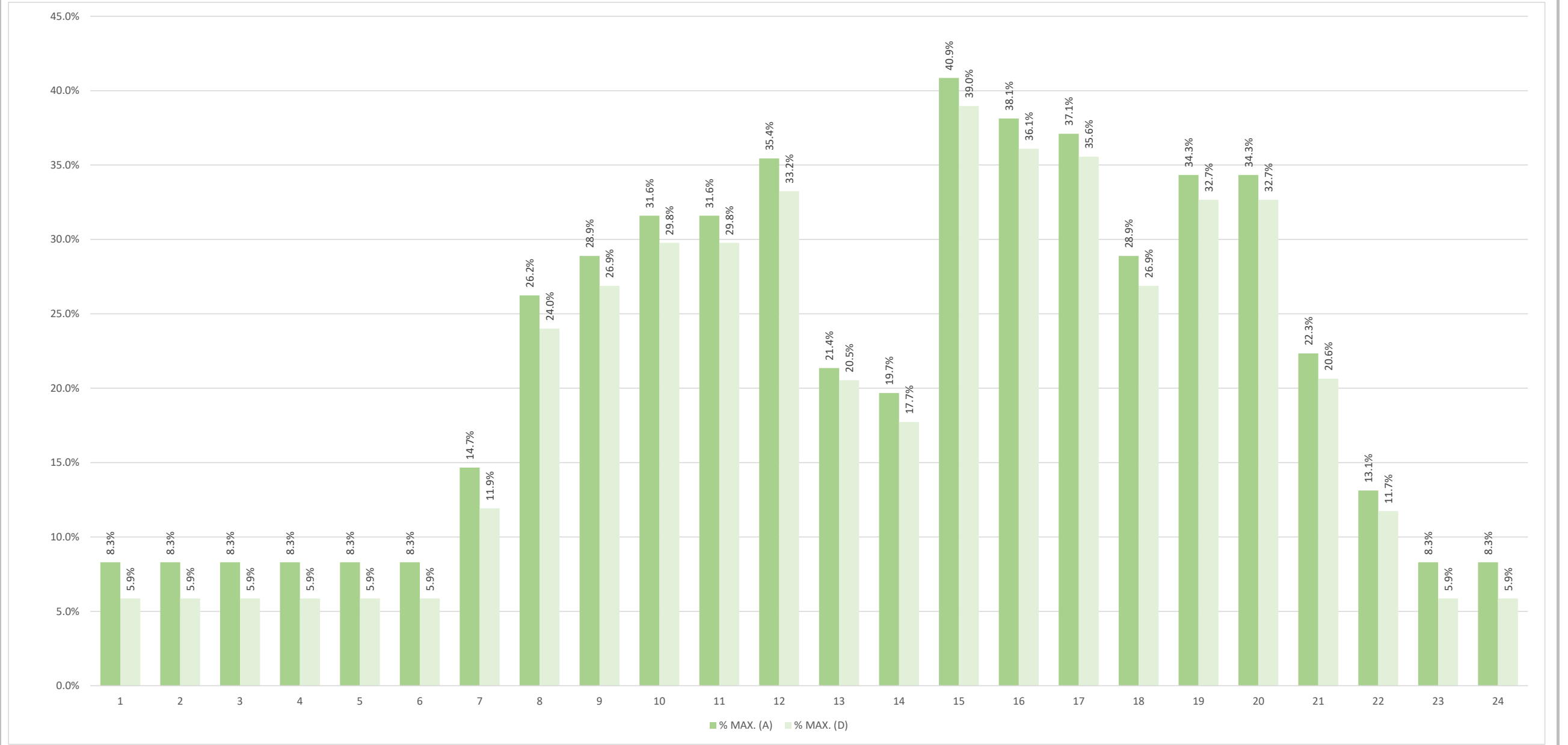


AÑO		2024	kVarh CAPACITIVOS REGISTRADOS POR DIA Y HORA (DESPUES) - UNIVERSIDAD INDUSTRIAL DE SANTANDER - BARRANCABERMEJA AULAS																								C/A (%)		DIAS	31
MES		12																									20.27%		kVarh PEN.	
DIA		1	2	3	4	5	6	7	8	9	10	11	12	13	14	15	16	17	18	19	20	21	22	23	24	TOTAL DIA			MIN.	MAX.
1	DO	1.80	1.80	8.40	1.80	1.80	8.40	1.80	8.40	1.80	1.80	8.40	1.80	1.80	8.40	1.80	8.40	1.80	1.80	8.40	1.80	1.80	1.80	8.40	1.80	96.00			1.8	8.4
2	LU	1.80	1.80	1.80	1.80	1.80	1.80	1.80							1.80					1.80		8.40	1.80	1.80	8.40	36.60				8.4
3	MA	1.80	1.80	1.80	1.80	1.80	1.80	1.80		1.80			1.80	1.80	1.80								1.80	1.80	1.80	25.20				1.8
4	MI	1.80	1.80	8.40	1.80	1.80	1.80							1.80	1.80	1.80			1.80		1.80	1.80	8.40	1.80	1.80	40.20				8.4
5	JU	1.80	1.80	1.80	1.80	1.80	1.80	1.80	1.80	1.80				1.80	1.80				1.80		1.80	1.80	1.80	1.80	8.40	37.20				8.4
6	VI	1.80	1.80	1.80	1.80	1.80	8.40	1.80					1.80	1.80									1.80	1.80	1.80	28.20				8.4
7	SA	8.40	1.80	1.80	1.80	1.80	8.40	1.80									1.80			1.80	1.80	1.80	1.80	8.40	1.80	45.00				8.4
8	DO	1.80	1.80	8.40	1.80	1.80	1.80	8.40	1.80	1.80	1.80	8.40	1.80	8.40	1.80	1.80	8.40	1.80	1.80	1.80	1.80	1.80	1.80	8.40	1.80	82.80			1.8	8.4
9	LU	1.80	1.80	1.80	1.80	1.80	1.80	8.40	1.80		1.80	1.80	1.80	8.40							8.40	1.80	1.80	1.80	1.80	50.40				8.4
10	MA	8.40	1.80	1.80	1.80	8.40	1.80	1.80	1.80					1.80	1.80		1.80		8.40	1.80		1.80	1.80	1.80	8.40	57.00				8.4
11	MI	1.80	1.80	1.80	8.40	1.80	1.80		1.80					1.80	1.80		1.80	1.80	1.80	1.80	1.80	1.80	8.40	1.80	1.80	45.60				8.4
12	JU	8.40	1.80	1.80	1.80	1.80	8.40	1.80	1.80	1.80	1.80		1.80	8.40	1.80	1.80	1.80	1.80	1.80	1.80	1.80	1.80	8.40	1.80	1.80	67.80				8.4
13	VI	1.80	8.40	1.80	1.80	1.80	1.80	8.40	1.80	1.80	1.80	1.80	1.80	8.40	1.80	8.40	1.80	1.80	8.40	1.80	1.80	1.80	1.80	1.80	1.80	76.20			1.8	8.4
14	SA	8.40	1.80	1.80	1.80	8.40	1.80	1.80	8.40	1.80	8.40	1.80	8.40	1.80	8.40	1.80	8.40	1.80	1.80	8.40	1.80	1.80	1.80	8.40	1.80	102.60			1.8	8.4
15	DO	1.80	8.40	1.80	1.80	1.80	1.80	8.40	1.80	1.80	1.80	8.40	1.80	1.80	8.40	1.80	8.40	1.80	1.80	8.40	1.80	1.80	1.80	1.80	8.40	89.40			1.8	8.4
16	LU	1.80	1.80	1.80	1.80	8.40	1.80	1.80	1.80	1.80	1.80	1.80	8.40	1.80	8.40	1.80	8.40	1.80	8.40	1.80	1.80	1.80	8.40	1.80	8.40	89.40			1.8	8.4
17	MA	1.80	8.40	1.80	8.40	1.80	8.40	1.80	1.80	1.80	1.80	8.40	1.80	1.80	8.40	1.80	1.80	8.40	1.80	8.40	1.80	8.40	1.80	8.40	1.80	102.60			1.8	8.4
18	MI	1.80	8.40	1.80	8.40	1.80	1.80	8.40	1.80	8.40	1.80	1.80	8.40	8.40	1.80	8.40	1.80	8.40	1.80	8.40	1.80	8.40	1.80	8.40	1.80	115.80			1.8	8.4
19	JU	8.40	1.80	1.80	8.40	1.80	8.40	1.80	8.40	1.80	1.80	8.40	1.80	8.40	1.80	8.40	1.80	8.40	1.80	8.40	1.80	1.80	8.40	1.80	8.40	115.80			1.8	8.4
20	VI	1.80	1.80	8.40	1.80	1.80	8.40	1.80	8.40	1.80	8.40	8.40	1.80	8.40	1.80	8.40	8.40	1.80	8.40	1.80	1.80	1.80	1.80	8.40	1.80	109.20			1.8	8.4
21	SA	8.40	1.80	1.80	8.40	1.80	1.80	8.40	1.80	8.40	1.80	8.40	1.80	8.40	1.80	8.40	1.80	1.80	8.40	1.80	1.80	1.80	8.40	1.80	1.80	102.60			1.8	8.4
22	DO	1.80	1.80	1.80	8.40	1.80	1.80	1.80	1.80	8.40	1.80	8.40	8.40	1.80	8.40	1.80	8.40	8.40	1.80	1.80	8.40	1.80	1.80	1.80	8.40	102.60			1.8	8.4
23	LU	1.80	1.80	1.80	1.80	1.80	1.80	1.80	8.40	1.80	1.80	8.40	1.80	8.40	1.80	8.40	1.80	8.40	1.80	1.80	8.40	1.80	1.80	1.80	8.40	89.40			1.8	8.4
24	MA	1.80	1.80	1.80	8.40	1.80	1.80	1.80	8.40	1.80	8.40	8.40	1.80	8.40	1.80	8.40	1.80	8.40	1.80	8.40	1.80	1.80	1.80	8.40	1.80	102.60			1.8	8.4
25	MI	1.80	1.80	1.80	1.80	1.80	8.40	1.80	1.80	8.40	1.80	8.40	1.80	8.40	1.80	8.40	1.80	8.40	1.80	8.40	1.80	1.80	1.80	8.40	1.80	96.00			1.8	8.4
26	JU	1.80	1.80	1.80	1.80	1.80	1.80	8.40	1.80	8.40	1.80	1.80	8.40	1.80	8.40	8.40	1.80	8.40	8.40	1.80	1.80	1.80	8.40	1.80	1.80	96.00			1.8	8.4
27	VI	1.80	8.40	1.80	1.80	1.80	8.40	1.80	1.80	8.40	1.80	8.40	8.40	1.80	1.80	8.40	1.80	8.40	1.80	8.40	1.80	1.80	1.80	1.80	8.40	102.60			1.8	8.4
28	SA	1.80	1.80	8.40	1.80	1.80	1.80	1.80	8.40	1.80	8.40	1.80	8.40	1.80	8.40	1.80	8.40	1.80	8.40	1.80	1.80	1.80	1.80	1.80	1.80	89.40			1.8	8.4
29	DO	8.40	1.80	1.80	1.80	1.80	8.40	1.80	1.80	1.80	1.80	8.40	1.80	8.40	8.40	1.80	8.40	1.80	8.40	1.80	1.80	8.40	1.80	1.80	8.40	102.60			1.8	8.4
30	LU	1.80	1.80	1.80	8.40	1.80	1.80	1.80	8.40	1.80	8.40	1.80	8.40	1.80	8.40	1.80	8.40	1.80	8.40	1.80	1.80	8.40	1.80	1.80	1.80	96.00			1.8	8.4
31	MA	8.40	1.80	1.80	8.40	1.80	1.80	8.40	1.80	8.40	1.80	1.80	8.40	1.80	8.40	1.80	8.40	1.80	1.80	1.80	8.40	1.80	1.80	1.80	8.40	102.60			1.8	8.4
TOTALES		108.6	88.8	88.8	115.2	75.6	121.8	105.0	99.6	89.4	74.4	125.4	104.4	131.4	123.0	107.4	117.6	100.8	106.2	106.2	75.0	85.2	102.0	115.2	128.4	2,495.4			1.8	8.4



HORAS	1	2	3	4	5	6	7	8	9	10	11	12	13	14	15	16	17	18	19	20	21	22	23	24	MAXIMOS
% MAX. (A)	8.3%	8.3%	8.3%	8.3%	8.3%	8.3%	14.7%	26.2%	28.9%	31.6%	31.6%	35.4%	21.4%	19.7%	40.9%	38.1%	37.1%	28.9%	34.3%	34.3%	22.3%	13.1%	8.3%	8.3%	0.4
% MAX. (D)	5.9%	5.9%	5.9%	5.9%	5.9%	5.9%	11.9%	24.0%	26.9%	29.8%	29.8%	33.2%	20.5%	17.7%	39.0%	36.1%	35.6%	26.9%	32.7%	32.7%	20.6%	11.7%	5.9%	5.9%	39.0%

